

# UFED Ultimate, UFED 4PC, UFED Touch 2 v7.18

May 2019

- Now supporting: 28,390 device profiles
- App versions: 8,788

Forensic methods	v. 7.18	Total
Logical extraction	118	11,263
Physical extraction*	124	6,942
File system extraction	122	6,891
Extract/disable user lock	43	3,294
Total	407	28,390

\*Including GPS devices

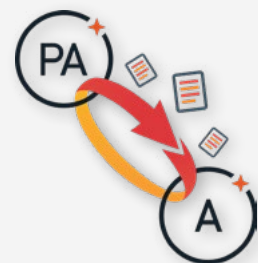
*The number of unique mobile devices with passcode capabilities is 5,295*

## App support

151 updated application versions for iOS and Android devices

### Streamline to Cellebrite Analytics Desktop V8.0

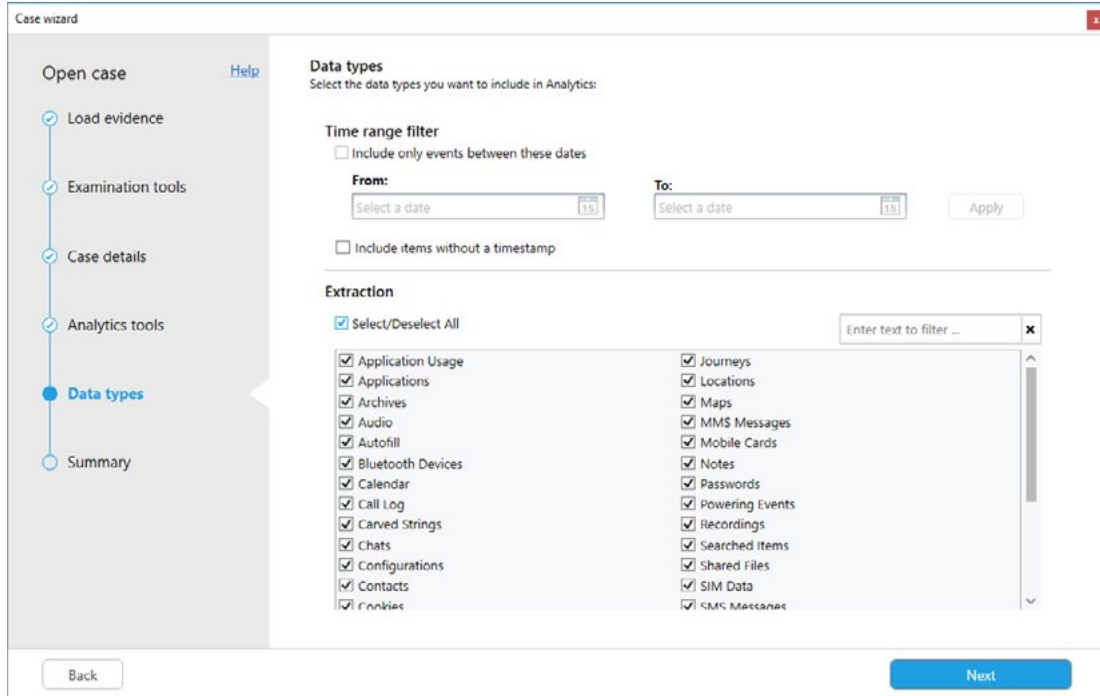
Users with Cellebrite Analytics Desktop installed on the same machine as UFED Physical Analyzer, can now benefit from a new streamlining process, eliminating the redundant manual upload of data into Analytics Desktop. The user-friendly case wizard, guides users through the steps of selecting which data types to report based on date ranges and streamline the content to Analytics while the decoding is taking place.



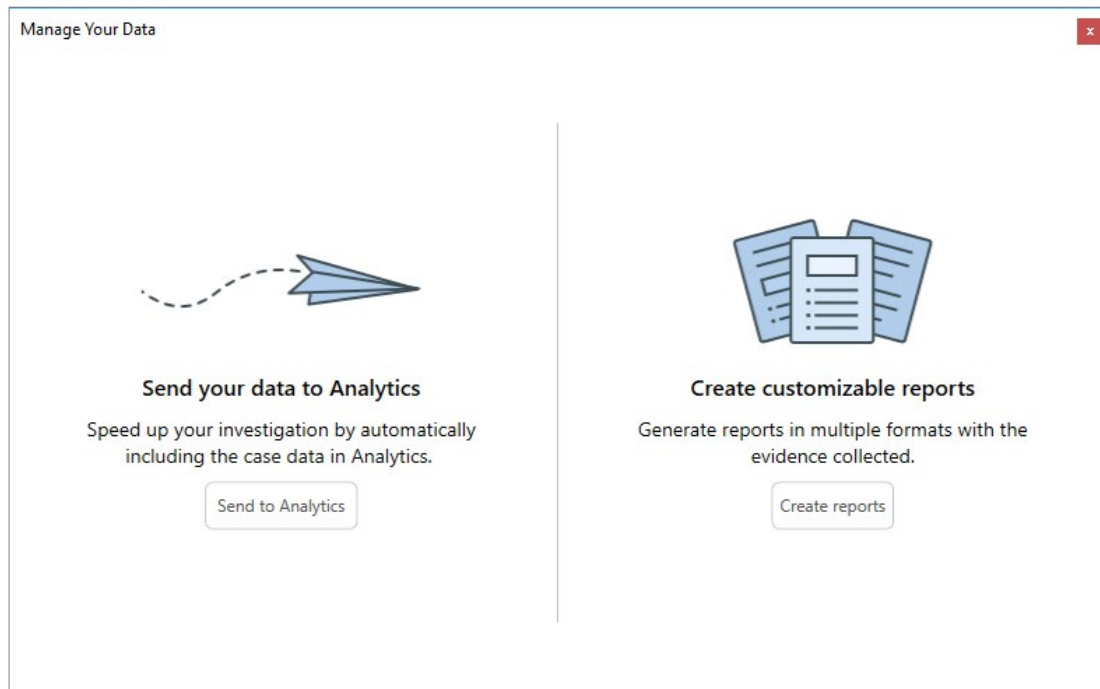
*Note: it is required to have at least 32GB RAM on the computer to be able to review and examine data in both UFED Physical Analyzer and Analytics Desktop..*

There are 2 options to streamline the data:

1. Speed up your investigation by including only the data you want to review in Analytics Desktop. As a result, data will be decoded and indexed, and a new case will be ready in Analytics Desktop with the selected data.



2. Once the data is ready, you can either send to Analytics, or create a customized report.



### Industry First: Get to evidence faster with Selective Extraction of cloud tokens

As more smartphone users retreat to the cloud for communicating on social media, and backing up important data, the cloud is a key source of evidence to retrieve important evidence and generate leads.



We are pleased to be the first to enable selective extraction of cloud tokens. This capability was created with the examiners in mind - helping them focus their efforts and expedite the extraction process.

Once the cloud tokens have been extracted using UFED, and decoded with UFED Physical Analyzer, take the account package and upload into UFED Cloud Analyzer, to retrieve valuable data from the cloud.

*Note: This capability is only available when performing a full file system extraction.*

### Faster extractions on select Android devices

We have improved the speed of Android extractions, to increase your daily throughput by up to 50% on select devices.



Coupled with the UDA3 device adapter, for devices with USB 3.0, beta customers have confirmed an even greater increase in productivity, tripling the number of device extractions per day!

**“With the latest version, dump times were super-fast. I tried extraction on 5 different models, it was even faster when using Smart ADB, EDL Decrypting, and Samsung Bootloader. Very impressive.”**

—  
Scott Lorenz

### Know your device with additional device properties data

Using UFED 7.18, easily make data driven decisions to prioritise devices in a specific case. Get greater visibility into what is on a device, with the enhanced device properties screen. Now available on screen: storage volume indication, data types, volume of storage per data type, as well as the number of accounts on the device!



### Configure UFED Physical Analyzer to open at the end of an extraction

To eliminate redundant touch points, users can now configure the UFED system to automatically open the extraction in UFED Physical Analyzer once the extraction has completed.



*Note: This is applicable in UFED 4PC.*

### Enhanced workflow in the APK downgrade

Users can now manually intervene during the app downgrade process to overcome installation issues where the device is not compatible. The system triggers the user intervention through a guided wizard.

## Additional enhancements

### Enhancement for UFED Downloader

When using the UFED downloader if a directory is entered which does not exist, Downloader presents a warning and clears the download path. In this version, when the start button is pressed and when the directory does not exist - a prompt will be presented, asking the user if he want to create new folder.

### Malware scanner results in reports

When running the malware scanner, all reports now include a new section, which summarizes the last Malware scan results.

Note: relevant to all report formats including UFDR. The malware scanner summary is presented in the extraction summary window when a UFDR is loaded into PA/Reader.

## Solved Issues

- A failure in the Timeline View when merging SIM card and GK extractions
- A failure in the Hash verification function for Advanced Logical extractions
- Decoding failure of the BlackBerry 9900 device
- Incorrect conversion of locations extracted from URLs (searched items) on computers running Windows 10 in German
- Location carver error on computers running Windows in German
- Zooming into a picture, not all aspects of the original picture is accessible



## Known Issues – Streamline to Analytics

- UFDR /XML reports opened in UFED Physical Analyzer will not be streamlined to Analytics
- New data can't be streamlined to a case while it is opened in Analytics
- Streamline is not available when the computer is running less than 32GB
- You can't streamline more than 5 extractions to Analytics at a single process

### iOS: New and updated apps

71 updated apps	
Aliwangwang	4.6.7
Any.DO	4.29.5
ASKfm	4.34
Booking.com	18.8
Chatous	3.8.26
Chrome	72.0.3626.101
Confide	8.3
Ctrip (Chinese)	8.2
Dropbox	132.3
Facebook	210.0
Facebook Messenger	205.0
Flipboard	4.2.35
Foursquare	11.14.1
Garmin Connect	4.16
Gmail	5.0.190211
Google App	68.0
Google Docs	1.2019.08203
Google Drive	4.2019.08203
Google Duo	48.0
Google Maps	5.12
Google+	6.51.1
Grindr	5.3.2
GroupMe	5.29.2
hike messenger	6.1.41
Hot or Not	5.104.0
Hushed	4.10.8
Inbox	1.3.190211
Instagram	83.0
InstaMessage	3.1.0
KakaoTalk	8.2.6
Keeper	14.2.3
KeepSafe	8.27.1
LINE	9.2.1
LinkedIn	9.1.122
Mail.Ru	9.17



MeetMe	13.12.0
Nike+ Run Club	5.22.0
Odnoklassniki	7.47.1
OkCupid	27.0.0
Pinterest	7.7
Runtastic	9.1.1
SayHi	7.21
Scruff	5.6026
Skout	6.4.1
Skype	8.40.1
Snapchat	10.52.0.23
Soma	2.0.12
Swarm	6.2.1
Tango	6.5.233115
Taxify	Cl.3.75
Text Free Ultra Texting	11.35.3
Text Me!	3.16.6
Text Now	9.8.0
Threema	4.1.2
TigerText	8.2
TikTok	10.3.0
Tinder	10.8.0
Truecaller	10.5
Twitter	7.43
Uber	3.341.10000
Viber	10.2
Vkontakte	5.10.1
Waze	4.49
WhatsApp	2.19.30
Whisper	8.11.12
Yandex Browser	19.3.1.564
Yandex Mail	3.79.0
Yandex Maps	11.1
Yubo	3.23.1
Zalo	190204
Zello	4.44

Android: New and updated apps

80 updated apps	
Android Messages	4.0.054 [dragon_RC17_xxhdpi.arm64-v8a.phone]
Any.DO	4.15.0.10
ASKfm	4.35



## Release Notes

Booking.com	17.1
Chrome	72.0.3626.121
CM Security Browser	5.22.21.0041
Dropbox	132.2.2
Facebook	211.0.0.43.112
Facebook Messenger	205.0.0.18.110
Fitbit	2.88
Flipboard	4.2.10
Gmail	9.2.3.235065705.release
Google Calendar	6.0.22-234118388-release
Google Docs	1.19.072.01.45
Google Drive	2.19.072.05.45
Google Duo	48.0.235461935.DR48_RC10
Google Maps	10.10.1
Google Photos	4.11.0.236189753
Google Quick Search Box	9.31.8.21.arm64
Google+	10.26.0.233822663
Grindr	5.3.2
GroupMe	5.35.7
Hangouts	30.0.235815591
Hot or Not	5.106.1
imo	9.8.000000011601
Instagram	83.0.0.20.111
InstaMessage	3.1.0
Kakao Story	5.6.3
KakaoTalk	8.2.7
KeepSafe	9.28.0
Kik Messenger	15.5.0.19618
LINE	9.2.2
Mail.Ru	8.10.0.26361
Mappy	6.1908.17771
MeetMe	13.12.1.1770
MobileVOIP Cheap Calls	7.22
My Tracks	4.2.1
Nimbuzz	7.0.1
Odnoklassniki	19.3.5
OkCupid	26.2.1
One Drive	5.26.2



## Release Notes

Opera Mini	39.1.2254.136743
Opera Mobile	50.2.2426.136249
Outlook.com	3.0.18
Pokemon GO	0.135.1
QQ	7.7.6
Runtastic	9.1.2
SayHi	7.21
Scruff	5.6045
Skout	6.5.0
Skype	8.40.0.86
Snapchat	10.52.1.0
Soma	2.0.12
Swarm	6.2
Tango	6.5.232905
Telegram Messenger	5.4.0
Text Free Ultra Texting	8.36
Text Me Up	3.17.0
Text Me!	3.16.3
Text Now	6.14.0.3
textPlus	7.4.5
TigerText	8.2.1.648
TikTok	10.1.10
Tinder	10.8.1
Truecaller	10.20.8
Tumblr	12.8.0.00
TunnelBear	v166
Twitter	7.85.0-release.35
Uber	4.250.10002
UC Browser	12.10.5.1171
Viber	10.2.0.3
VIPole	2.0.49
Vkontakte	5.29
Waze	4.49.0.3
WeChat	7.0.3
Weibo	9.3.0
WhatsApp	2.19.53
Yandex Browser	19.3.0.597
Zalo	19.02.03





Zello	4.46
Zello	4.46

Phone List

Physical extraction while bypassing lock

38 newly supported devices	
Alcatel	A405DL, 4028S One Touch Pixi 3 (4.5)
BLU	A090L Advance 4.0M
Coolpad	3310A Illumina
Fly	IQ4490i Era Nano 10
Homtom	HT70, HT16, HT7, Z8 Zoji
HTC	6275, PB99400 Desire CDMA
Huawei	NMO-GT3, NMO-L31 GR5 Mini
Lenovo	TB-8704F Tab 4 Plus, A1000
LG GSM	M250ds K10 Novo 2017
Chinese phones	Itel it5606
Chinese Android phones	Inoi 1 Lite
NTT Docomo	S0-04D
Nokia GSM	TA-1035 Nokia 2
Samsung GSM	SM-J530G_DS Galaxy J5 Pro, SM-A6058_DS Galaxy A9 Star Lite, SC-05G (Galaxy S6), SM-T378V Galaxy Tab E, SM-J530Y Galaxy J5 Pro, SM-A605FN_DS Galaxy A6+, SM-A605GN Galaxy A6+ 2018, SM-A605G_DS Galaxy A6+, SM-J730G_DS Galaxy J7 Pro, SM-J730GM_DS Galaxy J7 Pro, SM-J701F Galaxy J7 Core, SM-J701F_DS Galaxy J7 Core, SM-A720F Galaxy A7 2017, SM-G930S Galaxy S7, SM-A520W Galaxy A5 2017, DS Galaxy J7 Metal 2016, J710MN
Tablets	Samsung GT-P3113TS Galaxy Tab 2 7.0
Vodafone	VFD 200
ZTE GSM	L110 Blade, A0620

Physical extraction

124 newly supported devices	
AU	KYV44(Qua phone QZ), LGV33(Qua phone PX)
Alcatel	5059I 1X, A405DL, A502DL TCL LX Prepaid, 4028S One Touch Pixi 3 (4.5)
BLU	S1, C5
Celkon	C9 JUMBO, C108
Coolpad	3310A Illumina



Fly	Ezzy 7 Plus_DS, EZZY 9, 201118 Life Jet, 151018 Life Compact 4G, 261118 Life Play, FS458 Straus 7
HTC	2PVG200 Desire 628
Homtom	HT70, S17_DS, HT16, HT7, S99, Z8 Zoji
Huawei	JAT-AL00_DS Honor 8A, PCT-TL10_DS Honor V20, AGS2-L09 MediaPad T5, MYA-L41 Y6 2017, ELE-L29_DS P30, VOG-L29 P30 Pro, DUB-AL20_DS Enjoy 9, JMM-L22 Honor 6C Pro, COR-L29 Honor Play, SHT-W09 Mediapad M5, AUM-L41_DS Honor 7C, JSN-L23 Honor 8X
Lenovo	YT-X703F YOGA Tab 3 Plus, TB-8704F Tab 4 Plus, TB-X704F Tab 4 10 Plus
LG GSM	LML212VL Rebel 4 PREPAID, LM-Q710ULM Stylo 4, LM-Q710.FG Stylo 4, LM-Q850EAW G7 Fit, LM-V405UA_DS V40 ThinQ, M700A_DS Q6
Chinese phones	Ulcool V26, Ulcool V2T, Itel it5606, Itel it5616
Chinese Android phones	Inoi 1 Lite, Inoi 3 Lite, IRBIS TZ725e, Inoi 2 Lite, Digma LT4049PG Linx Atom 3G
Meizu	M923Q Note 9
Motorola GSM	XT1965-2_DS Moto G7 Plus, XT1926-7_DS Moto G6 Plus, XT1921-5 Moto E5 Play, XT1925DL Moto g6 Prepaid, T1926-6 Moto G6 Plus XT1952-2 Moto G7 Play, XT1955-2 Moto g7 Power, XT1761 Moto E4
NTT Docomo	SH-04G (AQUOS EVER), F-03H(arrows SV), SO-03G (Xperia Z4), SO-04D
Nokia GSM	TA-1035 Nokia 2, TA-1099 6.1 Plus, TA-1096 7.1, TA-1085 7.1, TA-1004_DS Nokia 8, TA-1119 8.1, TA-1116_DS 6.1 Plus
Prestigio	PFP1241DU0 Muze A1, PFP1285DU0 Muze D1_DS
Samsung GSM	SM-T595 Galaxy Tab A, SM-T590 Galaxy Tab A, SM-J337P Galaxy J3 Achieve, SM-T377W Galaxy Tab E, SM-J415FN Galaxy J4+, SM-J530G_DS Galaxy J5 Pro, SM-J600F Galaxy J6 (2018), SM-J600FN_DS Galaxy J6, SM-J260T1 Galaxy J2, SM-A600P Galaxy A6, SM-A750GN_DS Galaxy A7, SM-G8870_DS Galaxy A8s, SM-J720M_DS Galaxy J7 Duo, SM-J737V Galaxy J7 Verizon, SM-A600FN Galaxy A6 (2018), SM-S367VL Galaxy J3 Orbit, SM-S767VL Galaxy J7 Crown Prepaid, SM-J737T1 Galaxy J7 Star, SM-J737P Galaxy J7 Refine, SM-J737U Galaxy J7 Top, SM-N950U1 Galaxy Note 8, SM-G970F Galaxy S10e, SM-G975F Galaxy S10 Plus, SM-G9750 Galaxy S10 Plus, SM-G973F_DS Galaxy S10, SM-G9700 Galaxy S10e, SM-G973U1 Galaxy S10, SM-A6058_DS Galaxy A9 Star Lite
SoftBank	206SH, 509SH Aquos SoftBank
Tecno	KA7 Spark 2, LA6 Pouvoir 1, LA7 Pouvoir 2
UMI	Eagle Tab 10
VIVO	V1731CA Y73, 1714 Y69
Vodafone	VFD 820 Smart X9
Wiko	W_K300 Jerry 3
Xiaomi	M1903F2A MI 9 SE, M1805D1SE_DS Redmi 6 Pro, M1903C3GG Redmi Go, M1803E6G Redmi S2, M1804C3CG Redmi 6A, MI 6X, M1803E7SH Redmi Note 5, MEE7S Note 5_DS, M1803D5XE Redmi 6, M1901F7E Redmi Note 7

File system extraction while bypassing lock

23 newly supported devices	
Homtom	HT70, HT16, Z8 Zoji
HTC	6275, PB99400 Desire CDMA



Huawei	NMO-GT3, NMO-L31 GR5 Mini
LG GSM	M250ds K10 Novo 2017
Samsung GSM	SM-T377W Galaxy Tab E, SM-J530G_DS Galaxy J5 Pro, SM-A6058_DS Galaxy A9 Star Lite, SM-DS Galaxy J1 Mini Prime, SM-J106B, SM-DS Galaxy J1 Ace Neo, SM-J111F, SM-J530Y Galaxy J5 Pro, SM-A605FN_DS Galaxy A6+, SM-A605GN Galaxy A6+ 2018, SM-J730G_DS Galaxy J7 Pro, SM-J730GM_DS Galaxy J7 Pro, DS Galaxy J7 Metal 2016, J710MN
Tecno	LA6 Pouvoir 1

## File system extraction

122 newly supported devices	
AU	KYV44(Qua phone QZ), LGV33(Qua phone PX)
Alcatel	5059I 1X, A502DL TCL LX Prepaid, 4028S One Touch Pixi 3 (4.5)
BLU	S1, C5
Celkon	C9 JUMBO, C108
Coolpad	3310A Illumina
Fly	Ezzy 7 Plus_DS, EZZY 9, 201118 Life Jet, 151018 Life Compact 4G, 261118 Life Play, FS458 Straus 7
HTC	2PVG200 Desire 628
Homtom	HT70, S17_DS, HT16, HT7, S99, Z8 Zoji
Huawei	JAT-AL00_DS Honor 8A, PCT-TL10_DS Honor V20, AGS2-L09 MediaPad T5, MYA-L41 Y6 2017, ELE-L29_DS P30, VOG-L29 P30 Pro, DUB-AL20_DS Enjoy 9, JMM-L22 Honor 6C Pro, COR-L29 Honor Play, SHT-W09 Mediapad M5, AUM-L41_DS Honor 7C, JSN-L23 Honor 8X
Lenovo	YT-X703F YOGA Tab 3 Plus, TB-8704F Tab 4 Plus, TB-X704F Tab 4 10 Plus
LG GSM	LML212VL Rebel 4 PREPAID, LM-Q710ULM Stylo 4, LM-Q710.FG Stylo 4, LM-Q850EAW G7 Fit, LM-V405UA_DS V40 ThinQ, M700A_DS Q6
Chinese phones	Ulcool V26, Ulcool V2T, Itel it5606, Itel it5616, AEKU i5S, Itel it5022
Chinese Android phones	Inoi 1 Lite, Inoi 3 Lite, IRBIS TZ725e, Inoi 2 Lite, Digma LT4049PG Linx Atom 3G
Meizu	M923Q Note 9
Motorola GSM	XT1965-2_DS Moto G7 Plus, XT1926-7_DS Moto G6 Plus, XT1925DL Moto g6 Prepaid, T1926-6 Moto G6 Plus, XT1952-2 Moto G7 Play, XT1955-2 Moto g7 Power, XT1601, XT1925-6 Moto G6
NTT Docomo	SH-04G (AQUOS EVER), F-03H(arrows SV), SO-03G (Xperia Z4), SO-04D
Nokia GSM	TA-1035 Nokia 2, TA-1099 6.1 Plus, TA-1096 7.1, TA-1085 7.1, TA-1004_DS Nokia 8, TA-1119 8.1, TA-1116_DS 6.1 Plus, Fake Nokia E79+
Philips	E331 Xenium, E570 Xenium
Prestigio	PFP1241DU0 Muze A1, PFP1285DU0 Muze D1_DS



Samsung GSM	SM-T595 Galaxy Tab A, SM-T590 Galaxy Tab A, SM-J337P Galaxy J3 Achieve, SM-T377W Galaxy Tab E, SM-J415FN Galaxy J4+, SM-J530G_DS Galaxy J5 Pro, SM-J600F Galaxy J6 (2018), SM-J600FN_DS Galaxy J6, SM-J260T1 Galaxy J2, SM-A600P Galaxy A6, SM-A750GN_DS Galaxy A7, SM-G8870_DS Galaxy A8s, SM-J720M_DS Galaxy J7 Duo, SM-J737V Galaxy J7 Verizon, SM-A600FN Galaxy A6 (2018), SM-S367VL Galaxy J3 Orbit, SM-S767VL Galaxy J7 Crown Prepaid, SM-J737T1 Galaxy J7 Star, SM-J737P Galaxy J7 Refine, SM-J737U Galaxy J7 Top, SM-N950U1 Galaxy Note 8, SM-G970F Galaxy S10e, SM-G975F Galaxy S10 Plus, SM-G9750 Galaxy S10 Plus, SM-G973F_DS Galaxy S10, SM-G9700 Galaxy S10e, SM-G973U1 Galaxy S10, SM-A6058_DS Galaxy A9 Star Lite
SoftBank	206SH
SoftBank	509SH Aquos SoftBank
Tecno	KA7 Spark 2
Tecno	LA6 Pouvoir 1, LA7 Pouvoir 2, T312
UMI	Eagle Tab 10
VIVO	V1731CA Y73, 1714 Y69
Vodafone	VFD 820 Smart X9
Wiko	W_K300 Jerry 3
Xiaomi	M1903F2A MI 9 SE, M1805D1SE_DS Redmi 6 Pro, M1903C3GG Redmi Go, M1901F7E Redmi Note 7

## Logical extraction

118 newly supported devices	
Alcatel	4028S One Touch Pixi 3 (4.5), A502DL TCL LX Prepaid, 50591 1X
BLU	C5, S1
Celkon	C9 JUMBO, C108
Coolpad	3310A Illumina
Doro	PhoneEasy 626 (Serial), PhoneEasy 626 (BT)
Fly	Ezzy 7 Plus_DS, EZZY 9, 201118 Life Jet, 151018 Life Compact 4G, 261118 Life Play, FS458 Straus 7
HTC	2PZC300 U-3u U11, 2PVG200 Desire 628
Homtom	HT70, S17_DS, S99, Z8 Zoji
Huawei	VOG-L29 P30 Pro, DUB-AL20_DS Enjoy 9, JMM-L22 Honor 6C Pro, AGS2-L09 MediaPad T5, COR-L29 Honor Play, PCT-TL10_DS Honor V20, SHT-W09 Mediapad M5, MYA-L41 Y6 2017, JSN-L23 Honor 8X, JAT-AL00_DS Honor 8A, AUM-L41_DS Honor 7C
Lenovo	TB-8704F Tab 4 Plus, TB-X704F Tab 4, YT-X703F YOGA Tab 3 Plus
LG GSM	M700A_DS Q6, LML212VL Rebel 4 PREPAID, LM-Q710.FG Stylo 4, LM-Q710ULM Stylo 4, LM-V405UA_DS V40 ThinQ, LM-Q850EAW G7 Fit
Chinese phones	Chinese Brand Ttinle Y918_DS, Ulcool V26, Ulcool V2T, Itel it5606, Itel it5616, AEKU i5S, Itel it5022
Chinese Android phones	Inoi 3 Lite, IRBIS TZ725e, Inoi 2 Lite, Inoi 1 Lite, Digma LT4049PG Linx Atom 3G
Meizu	M923Q Note 9



Motorola GSM	XT1965-2_DS Moto G7 Plus, XT1926-7_DS Moto G6 Plus, T1926-6 Moto G6 Plus, XT1952-2 Moto G7 Play, XT1955-2 Moto g7 Power, XT1601, XT1925DL Moto g6 Prepaid, XT1925-6 Moto G6
Nokia GSM	TA-1035 Nokia 2, TA-1099 6.1 Plus, TA-1096 7.1, TA-1085 7.1, TA-1004_DS Nokia 8, TA-1116_DS 6.1 Plus, TA-1119 8.1
Philips	E331 Xenium, E570 Xenium
Prestigio	PFP1241DUO Muze A1, PFP1285DUO Muze D1_DS
Samsung GSM	SM-J337P Galaxy J3 Achieve, SM-T377W Galaxy Tab E, SM-J415FN Galaxy J4+, SM-J530G_DS Galaxy J5 Pro, SM-T595 Galaxy Tab A, SM-T590 Galaxy Tab A, SM-J600F Galaxy J6 (2018), SM-J600FN_DS Galaxy J6, SM-J260T1 Galaxy J2, SM-A600P Galaxy A6, SM-A750GN_DS Galaxy A7, SM-G8870_DS Galaxy A8s, SM-J720M_DS Galaxy J7 Duo, SM-J737V Galaxy J7 Verizon, SM-A600FN Galaxy A6 (2018), SM-J737T1 Galaxy J7 Star, SM-J737P Galaxy J7 Refine, SM-J737U Galaxy J7 Top, SM-N950U1 Galaxy Note 8, SM-G970F Galaxy S10e, SM-S367VL Galaxy J3 Orbit, SM-S767VL Galaxy J7 Crown Prepaid, SM-G975F Galaxy S10 Plus, SM-G9750 Galaxy S10 Plus, SM-G973F_DS Galaxy S10, SM-G9700 Galaxy S10e, SM-G970U Galaxy S10e, SM-G973U1 Galaxy S10, SM-A6058_DS Galaxy A9 Star Lite
Tecno	LA6 Pouvoir 1, LA7 Pouvoir 2, KA7 Spark 2, T312
UMI	Eagle Tab 10
VIVO	V1731CA Y73, 1714 Y69
Vodafone	VFD 820 Smart X9
Wiko	W_K300 Jerry 3
Xiaomi	M1903F2A MI 9 SE, M1805D1SE_DS Redmi 6 Pro, M1903C3GG Redmi Go, M1901F7E Redmi Note 7, MDG6 Redmi Note 5A

### Cryptographic Hash Values Information

You can validate the integrity of Cellebrite's UFED software files by verifying their cryptographic hash values. This can help you identify whether a file has been changed from its original state.

Product	MD5	SHA-256 (Recommended)
Touch2 (cpkg)	7791e9d8c301b379ec37b541c800fbd4	6ec314d9aa33a6082c6b8a0dd5b6450dc52b2a00b8adf89d04dbb6cac031188b
4PC (cpkg)	5de768eb7ccd89d5c4d935bc1270e702	a02b6e3f08fae432971de156cdd7c927e077613ee5d0e9ca0d0ca7091b088f2f
4PC (exe)	5855e58597476093b1887a3edcbcd771	7290e570256b5caa4ecf0791491ad71833876215e26c1e5131867f40ef1ef0e4
Permission Manager (exe)	58ad2f35351e62049e594186cb79c9c7	e6dc3b8665d49b88f766b7b2e6f233213a5076f3f467ea2d37b80b9ab7218ea7
UFED Physical Analyzer	8a49e4057ad8669e9da7f6e35f5b0c0b	4b9b34edd56756dcb0b3a57c7a9d4c6714a190d800c554b68496d8fced6444bb
UFED Logical Analyzer	86d2034a11eaab6952ef2c859895b8ec	44e1087789162ca233c8e593aaa7fe1f870c395a85ad99bce62a837494824765
Cellebrite Reader	3150c324c1023d7eff1502daa9c9c26c	906c7330f6007824501c5cd684331189fb9dbe05ea4a17f0c5cc6cb0c884e11

