

UFED 4PC, UFED Touch 2 and UFED InField v7.33

April 2020

Now supporting: 31,074 device profiles

App versions: 10,604

Forensic Method	Version 7.33	Total
Logical extraction	37	12,020
Physical extraction*	42	7,702
File system extraction	41	7,702
Extract/disable user lock	1	3,650
Total	121	31,074

*Including GPS devices

The number of unique mobile devices with passcode capabilities is **5,542**.



Industry-First: Perform full file-system extraction on file-based Samsung Exynos devices

Cellebrite introduces a first-to-market solution to perform a full file-system extraction on the file-based encrypted, Samsung Exynos S10 and A10-A50 devices. As Samsung continues to dominate the smartphone market with over 32% global market share, the need to extract new or previously untapped digital evidence and prepare for future evidence produced by the next generation of Samsung devices continues to be a Cellebrite mission.

In this version of UFED, we have introduced support for more than 12 new device models running the latest version of the operating system. This includes extraction from flagship device models such as Samsung Galaxy S10, S10+ and S10e as well as many others.

A comprehensive list of supported devices can be found in the **Supported Devices** section.

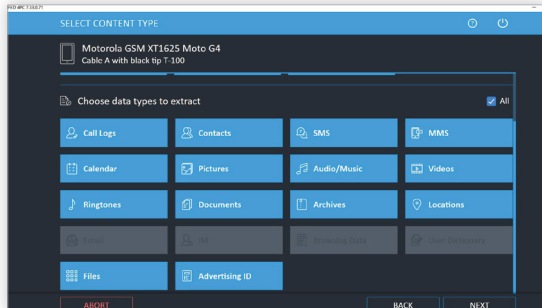


Supporting extraction from devices running iOS 13.4.X

Based on checkm8, this version of UFED allows examiners to perform full file-system extractions from supported devices running iOS version up to 13.4.x.

➔ Improved selective extraction in Android Advanced Logical

Advanced Logical is one of the most commonly used methods in UFED. In order to save time and allow better level of data granularity, we added more data types that can be selected in Advanced Logical. The new data types include locations, archives, and documents. In addition, we added the capability to extract Google Advertisement-ID (AD-ID) in the Advanced Logical extraction.

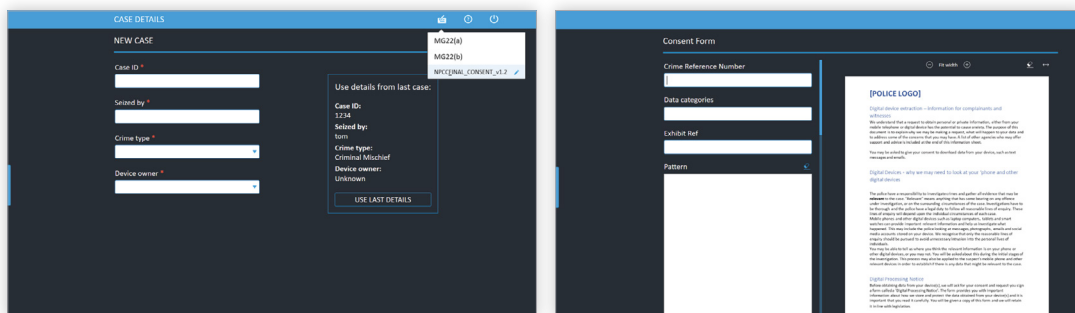


UFED InField Product Enhancements

➔ Supporting agency needs to incorporate multiple forms

This version of UFED InField enables you to upload and incorporate as many official forms as needed to comply with your standard operating procedures. Investigators can now customize multiple types of documents and upload them to the system as part of the extraction and review workflow. The forms will be available for editing at any stage of the data collection process.

For agencies in the UK, this allows you to incorporate the Streamlined Forensic Report (SFR) document into your workflow, to eliminate repetition and minimize errors, while ensuring you comply with local standards.



Phone List

Perform full file-system extraction on Samsung Exynos devices:

12 newly supported devices

Samsung GSM

SM-A202F_DS Galaxy A20e, SM-A102U Galaxy A10e, SM-A105F Galaxy A10, SM-A205G_DS Galaxy A20, SM-A305G_DS Galaxy A30, SM-A307GN_DS Galaxy A30s, SM-A505G_DS Galaxy A50, SM-A505U Galaxy A50, SM-A5070_DS Galaxy A50s, SM-G970F Galaxy S10e, SM-G975F Galaxy S10 Plus, SM-S102DL Galaxy A10e



Physical extraction while bypassing lock

11 newly supported devices	
HTC	6275, PB99400 Desire CDMA
Huawei	NMO-GT3, NMO-L31 GR5 Mini
Nokia GSM	105 (TA-1037)
Oppo	A33m_DS
Samsung GSM	SC-05G (Galaxy S6)
Tablets	Samsung GT-P3113TS Galaxy Tab 2 7.0
VIVO	Y31A_DS, Y923_DS, Y18L

Physical extraction

42 newly supported devices	
Asus	X017DA ZenFone 5Q, ZC600KL, X00TD Zenfone Max Pro, ZB602KL, X00QD Zenfone 5, ZE620KL, Z01MDA ZenFone 4 Selfie Pro, ZD552KL, X00RD ZenFone Live, ZA550KL, Z01BDC ZenFone 3, ZC551KL
Doogee	S95Pro
Fujitsu	F-01H Arrows Fit, F-02G Arrows NX
HTC	Wildfire X, 2Q8L100 Desire 19s, 6275, PB99400 Desire CDMA
Huawei	NMO-GT3, NMO-L31 GR5 Mini
Kyocera	KYX31 Infobar Xv
LG CDMA	H790, bullhead Nexus 5x, LGM322 X Charge Xfinity, X Power 2
LG GSM	LM-X210EM K9
Chinese Android phones	Matsunichi M97
Motorola GSM	XT1970-3 One Vision, XT2029-1_DS E6 Play, XT2013-2 One Action
Nokia GSM	105 (TA-1037), TA-1175_DS 2720 Flip, TA-1071 8110 4G
Oppo	A33m_DS, R9km, R11t
Oukitel	K9, Y1000, C16_DS, K7 Pro, C17 Pro
Samsung GSM	SM-G988B_DS Galaxy S20 Ultra, SM-T705 Galaxy Tab S, SM-G977U Galaxy S10 5G, SM-G981U1 Galaxy S20 5G, SM-G986B_DS Galaxy S20+ 5G, SM-A307FN_DS Galaxy A30s, SM-A507FN_DS Galaxy A50s, SM-G985F Galaxy S20 Plus,
VIVO	Y75s_DS, X20 Plus A, Y66L, V1818CA_DS Y93s, Y31A_DS, Y923_DS, Y18L, V1938CT X30, X20, Y67A

File system extraction while bypassing lock

4 newly supported devices	
HTC	6275, PB99400 Desire CDMA
Huawei	NMO-GT3, NMO-L31 GR5 Mini



File system extraction

41 newly supported devices	
Alcatel	40440 One Touch
Doogee	S95Pro
Fujitsu	F-01H Arrows Fit, F-02G Arrows NX
HTC	Wildfire X, 2Q8L100 Desire 19s
Kyocera	KYX31 Infobar Xv
LG GSM	LM-X210EM K9
Chinese Android phones	Matsunichi M97
Motorola GSM	XT1970-3 One Vision, XT2029-1_DS E6 Play, XT2013-2 One Action
Nokia GSM	TA-1175_DS 2720 Flip, TA-1071 8110 4G, Fake Nokia E79+
Oppo	A33m_DS, R11t
Oukitel	K9, Y1000, C16_DS, K7 Pro, C17 Pro
Samsung GSM	SM-G988B_DS Galaxy S20 Ultra, SM-T705 Galaxy Tab S, SM-G977U Galaxy S10 5G, SM-G981U1 Galaxy S20 5G, SM-G986B_DS Galaxy S20+ 5G, SM-A307FN_DS Galaxy A30s, SM-A507FN_DS Galaxy A50s, SM-G985F Galaxy S20 Plus
VIVO	Y75s_DS, X20 Plus A, Y66L, V1818CA_DS Y93s, Y31A_DS, Y923_DS, Y18L, V1938CT X30, X20, Y67A

Logical extraction

37 newly supported devices	
Doogee	S95Pro
Fujitsu	F-01H Arrows Fit, F-02G Arrows NX, F-01J Arrows NX, Arrows M04, Arrows M03
HTC	Wildfire X, 2Q8L100 Desire 19s
Kyocera	KYX31 Infobar Xv
LG GSM	LM-X210EM K9
Chinese Android phones	Matsunichi M97
Motorola GSM	XT1970-3 One Vision, XT2029-1_DS E6 Play
Nokia GSM	TA-1071 8110 4G
Oppo	A33m_DS, R9km, R11t
Oukitel	K9, Y1000, C16_DS, K7 Pro, C17 Pro
Samsung GSM	SM-G988B_DS Galaxy S20 Ultra, SM-T705 Galaxy Tab S, SM-G977U Galaxy S10 5G, SM-G981U1 Galaxy S20 5G, SM-G986B_DS Galaxy S20+ 5G, SM-G985F Galaxy S20 Plus
VIVO	Y75s_DS, Y923_DS, V1818CA_DS Y93s, Y18L, Y31A_DS, Y66L, X20, Y67A, X20 Plus A, V1938CT X30
VIVO	Y75s_DS, X20 Plus A, Y66L, V1818CA_DS Y93s, Y31A_DS, Y923_DS, Y18L, V1938CT X30, X20, Y67A

