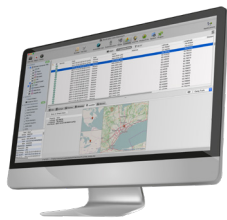





BlackLight®



A market leading solution for the quick and comprehensive analysis of computer extractions helping forensics examiners and analysts to shed light on and gain actionable insights from user activity. With an easy to operate interface that enables simple searching, filtering and sifting through large data sets, BlackLight® is the best option available to perform smart data analysis.

BlackLight® supports ongoing forensic toolkit integrations to bring data into one case; including products like Berla, Semantics 21, PhotoDNA, Project Vic, APOLLO and more.

Key Benefits

 Windows Support	 Mac Support	 iOS, All GrayKey Formats, and Android Support
<ul style="list-style-type: none"> Review device history from Microsoft Volume Shadow Copies 	<ul style="list-style-type: none"> Full support for Apple Latest Systems APFS; including T2 chip, fusion and encrypted devices 	<ul style="list-style-type: none"> Easily view message conversations
<ul style="list-style-type: none"> Built-in Windows Memory and Windows Registry analysis 	<ul style="list-style-type: none"> Review device history from APFS Snapshots and Time Machine backups 	<ul style="list-style-type: none"> Review Health data, Wallet transactions, and Calendar activity
<ul style="list-style-type: none"> Automatically parse account information, recent documents, downloads, recycle bin, USB connections and more 	<ul style="list-style-type: none"> Display and search Spotlight and KnowledgeC data 	<ul style="list-style-type: none"> Ingest many Cellebrite extractions
<ul style="list-style-type: none"> Supporting user activity and registry artifacts such as: jump list, shell bags, prefetch, event logs, superfetch, Windows10 timeline activity, srum and more 	<ul style="list-style-type: none"> Review Spotlight data, network connections, recent documents, and user activity 	<ul style="list-style-type: none"> Built in SQLite and Plist viewing to review application data

